

efor2

gas forecast



Energia che migliora la vita.

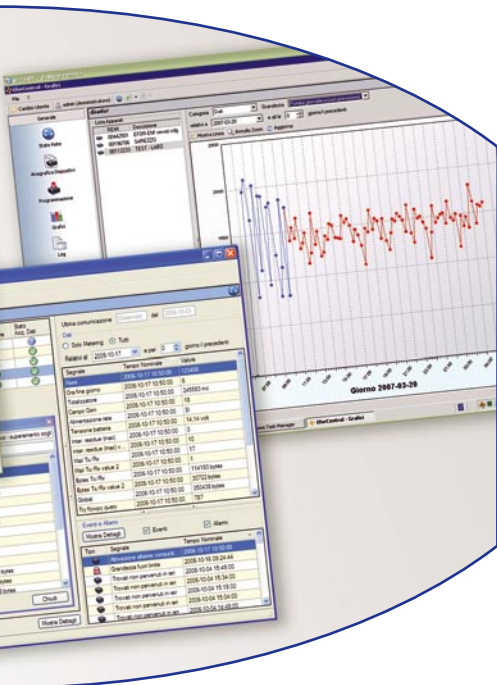
Report

After the device has been properly installed, it is possible to use the following functions:

- » receive a report at 6:00 a.m. of the previous day consumption;
- » receive messages that an alarm has been activated (and messages of a return to acceptable values) for probable excess volume and the projected time at which the excess will occur;
- » receive messages regarding any problems such as disconnected cable or loss of 230V electrical power;
- » a current status report can be requested via e-mail or SMS.

By means of installation of EforCentral software is further possible:

- » obtain an archive of consumptions from the first day of installation until today;
- » visualize the state of every installed Efor2 devices;
- » visualize diagram relating to flow rates and consumption volume;
- » analyze the course of daily consumptions, overlap real consumptions with forecasting consumptions, to optimize productive process.



Power requirements

The device requires a 230VAC 50Hz electrical power supply.

Power supply: 230 VAC or backup battery

Power

Consumption: 30W

Dimensions: 170x280x55 mm

Mode of operation

The instrument periodically queries the modem for a configuration SMS/ e-mail and queries the flow computer to add the current data to the main memory.

The factory settings permit the instrument to send every day at 6.00 a.m. a report on the previous day, besides alarm and disservices indications.

In forecasting modality, the system sends an alarm at every rating of daily consumption which results major of the set up maximum level; a re-entry alarm is sent when the following lower rating is reached.

In daily consumption modality is possible to shape up to 3 consumption level, when the real volume of calculator exceeds one of this level an alarm is directly sent to retains, with the indication of which level has been exceeded.

The control on consumptions is effectuated periodically, with a configurable break (typically every 15 minutes).

The system offers advanced metering mode of operation supplying automatically consumption data, hourly flow rates of latest 2 days and daily volumes of latest 2 months, directly to e-mail boxes of retains. Besides, it allows to execute at the same time a query to know the current state of consumption and alarm state.

The supported protocols are:

- » Snam, for link to calculators through RS232 or RS485;
- » Elgas, for link to correctors ECOR2;
- » Modbus, for link to correctors EFL0/MODBUS;
- » Impulsive enter for link to meters.

Besides, it is possible specify a time from which start monitoring any alarm, so that to exclude periods in



which the estimate could not be so reliable (typically at the begin of the day).

Possible sirens or light alarms are directly driven from Efor2 through relè exit, the same as a link to external PCL (or similar).

It can be activated a noiseless alarm system via sms.

EforCentral

It is available a software dedicated to Efor2 systems, through which collect consumption data and control the correct working of disposables.

Its main features are:

- » Display of net state;
- » Graphic and charting display of consumptions of every single system;
- » Display of extemporaneous alarm (through pop-up window);
- » Systems remote configuration;
- » Systems remote query;
- » Systems registry administration;
- » Creation of report compatible with Excel;
- » Archive of events and errors occurred on the device or on calculator.

CPL CONCORDIA Soc. Coop
via A. Grandi, 39 - 41033 Concordia s./S (MO) - ITALY - tel. +39.535.616.111 - fax +39.535.616.300
info@cpl.it - www.cpl.it

CPL CONCORDIA COMUNICAZIONE

